



# AirparkOhio

CONNECT ▾ DEVELOP ▾ ACHIEVE



## CONNECT EASILY TO YOUR MARKET

### Easy Access for Your Business or Aviation Needs

Airpark Ohio is located between Dayton and Columbus, just 4 miles south of Springfield. Airpark Ohio is the unique combination of a business park, municipal airport, and a general aviation complex that serves commercial, military, and business development needs.

For over 50 years, Springfield-Beckley Municipal Airport at Airpark Ohio has been a regional transportation hub for private pilots, business and the military. The Ohio Air National Guard's recent pilot training for the F-16 helped Airpark Ohio build state-of-the-art amenities not typically found at an airport of this size. Airpark Ohio is the general aviation center closest to Wright-Patterson Air Force Base with only a 20-minute drive time.



#### Springfield-Beckley Municipal Airport

FAA Identifier SGH  
Instrument Approach VOR-DME & ILS

#### Runway Specs

	Runway 6/24	Runway 15/33
Length	9,000'	5,500'
Width	150'	100'
Runway Edge Lighting	High Intensity	Medium Intensity
Approach Lighting	SALSAR- Radio Controlled	

#### Airport Information

Latitude	N39o 50.42'	
Longitude	W83o 50.41'	
Magnetic Radial	6.1o West	
Approved Instrument Approach	Runway 24	
Approach Control	Tower 120.7	Ground 121.7
Fuel Type Offered	AV Gas 100 LL	Jet A
	(Both Self Service)	
Unicom	122.95	
AWSS	134.975	

#### Business Park

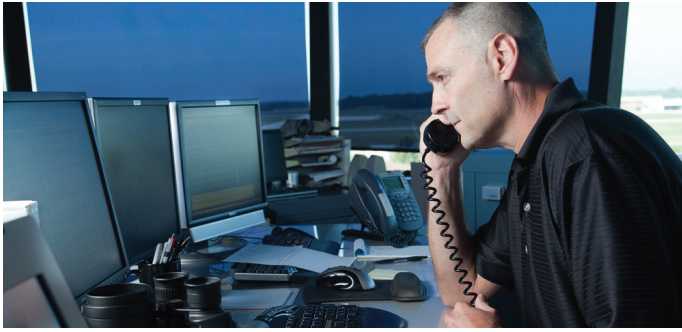
Acres	191 acres
Utilities	Sewer • Water • Gas • Electricity
Zoning	Light Manufacturing • Service Office • Warehousing
Topography	Level Site Terrain
Location	Adjacent to Springfield-Beckley Municipal Airport
Work Force	491,000 (Five surrounding counties)



### Airpark Ohio Is Ideal For

- Research and Testing
- UAS Research
- Sensors Testing
- Airplane Maintenance
- Military Research/Operations
- Flight School
- Prototype Development
- Distribution Centers
- Manufacturing
- Flight Testing
- Business Development
- General Aviation





## A Small Airport with Big Amenities

Airpark Ohio has a surprising number of amenities you will not find at other small airports.

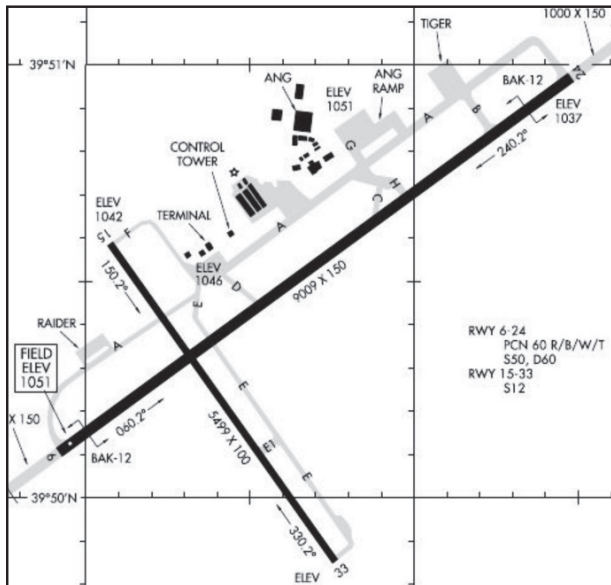
### Air Traffic Control

Airpark Ohio recently constructed a new state-of-the-art air traffic control tower that features precision landing systems and a military grade radar system that will verify the location of aircraft within a 60-mile radius of the site. The Instrument Landing System (ILS) provides all-weather landing capability and air access.

### Runways for Large Aircraft

Two intersecting runways are capable of handling anything from a heavy military transport to a small two-seat training aircraft:

- 9,000' x 150' Primary Runway
- 5,500' x 100' Crosswind Runway



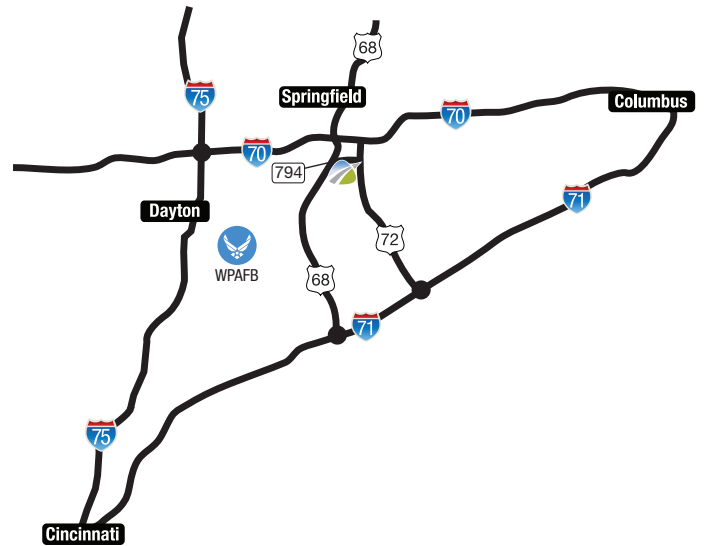
### Aircraft Rescue & Firefighting

Up-to-date rescue equipment and procedures allow Airpark Ohio to easily control and extinguish aircraft fires. This asset provides the reassurance that dangerous situations can be handled carefully, swiftly and efficiently.



“We’ve reached 99.6 percent customer satisfaction for our business. This would not have been possible without the support and amenities of Springfield-Beckley Municipal Airport and AirPark Ohio.”

- Mike Catherwood, Spectra Jet



### S-Jet

FAA Certified Repair Station #X1JR161Y  
1251 W. Blee Rd., Springfield, OH 45502  
(937) 323-5804

### Full Service Fixed Base Operator

The general aviation terminal has a 9,800-square yard itinerant ramp for visiting aircraft and air taxi service. The FBO provides many conveniences and services including:

- Rental Car Service
- Sleeping Room
- Conference Room
- Weather Computer
- Competitive Fuel Cost
- T-Hanger Space Rental
- Tie Down Service
- Flight Planning Room
- Kitchen
- Flight Aware (Live Flight Tracking System)
- Flight Plan Services
- Catering
- Corporate Hangers
- Aircraft Maintenance